

MISGA

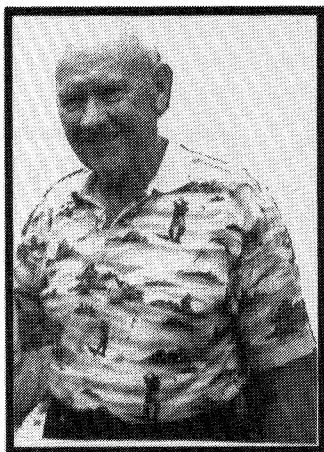


1975 - 2000

MISGAGRAM

PRESIDENT'S MESSAGE

The year 2000 marks the twenty - fifth anniversary of the founding of MISGA. When Al Hagen and a few of his golfing buddies took the important step of organizing MISGA it was with the foresight and energy that is so necessary in the development of any new product or idea. Through the last twenty-five years our leadership has consistently and willingly dedicated time and energy to continuing the development of our fine organization.



Now it is our turn to keep the ball flying! Every Club Rep, all the Board Members and the Committee Chairmen know and understand the work that is involved in schedul-

ing, planning and arranging for mixers, qualifying tournaments, division and state finals, the board bash, spring, winter and fall frolics and other special events. These things don't just happen. A lot of work, time and effort is expended to enhance the enjoyment of playing golf in MISGA. I think it is important that we all recognize what it takes to make MISGA the fine organization that it is today. Don't hesitate to volunteer to help your Club Rep, participate in your club home and away mixers, support the frolics and most importantly, spread the word about MISGA.

In this, the twenty-fifth anniversary year, we can all be thankful for the work done by our predecessors. We should be proud and willing to expend some of our time and energy to ensure continued growth and strengthening of MISGA. This is our organization - let's go for another quarter century! Good golfing in year 2000!

Duke Rowdon

LETTER FROM THE EDITOR

Based on the success of annual mixers between Lakewood and Kenwood Country Clubs, MISGA was conceived 25 years ago. Since we have a documented history, this MISGAGRAM is a commemorative issue recognizing our growth and success and heralding the next 25 years. The goal of MISGA is simple: to foster friendships and camaraderie through golf tournaments, mixers, events and trips. The tremendous growth and vitality of the organization provides evidence that the goals have more than been achieved. The growth continues with two new golf clubs joining MISGA to begin the new century. We have included articles describing them.

This issue also contains articles from and about several of our early leaders, excerpts from the Lakewood Country Club newsletters of 1976 and 1977, an article about one of our outstanding members, anecdotal articles and a piece about the history of MISGA trips.

I have included pictures of 31 of our favorite golf holes. Originally the intent was to select the best 18 holes by voting. However, the selection was too difficult so I have included pictures and write-ups of all submissions. My personal goal is to play each of these holes some day.

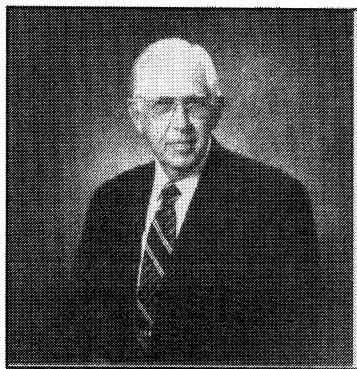
I would like to thank all the Reps for their enthusiastic and timely response to my request for information for this special issue of MISGAGRAM. I was particularly pleased and impressed with the letter from Bill Horney, Head Pro at Prospect Bay, describing its challenging 18th hole. I have included Bill's letter in "Letters to the Editor".

This organization has meant a great deal to me in my retirement years. I have enjoyed the opportunity to meet many new people, play wonderful golf courses, and participate in fun-filled MISGA trips and events. I am sure I echo your sentiments.!!!

Congratulations to all MISGA Associates and those who have made MISGA what it is today.!!!

Dick Hunt, editor

Tribute to Sam OUTSTANDING SERVICE AWARD



At this year's trip to Jekyll Island, a participant told us how pleased he was to be paired with Sam Hastings in a golf match. Sam is known throughout the MISGA organization as a true gentleman and tireless worker for MISGA. This year Sam was recognized at the annual Reps meeting for his outstanding service to

MISGA.

Sam has held many positions of responsibility in MISGA for the past 20 years. He worked with our founder, Al Hagen, in the formative years. He was the first Associates Chairman and was responsible for our roster being entered into a computer for the first time. He chaired the Policy and Plans Committee in 1981 which created the basis for the current organization. He has been Club Rep, Div Director, and in 1985, MISGA president. He published the first History of MISGA. Today Sam is best known as the organizer, conductor and participant in our fall trips. We are all indebted to Sam for his contributions to MISGA.

The *real* Sam Hastings, a native of Wilmington DE, is a retired aeronautical engineer who spent 31 years at the Naval Ordnance Laboratory in Silver Spring, MD. At his retirement, he was a staff specialist in wind tunnel experimental dynamics, having previously served as chief of the Applied Aerodynamics Division. Academically, he graduated from Juniata College in PA and did graduate work at the U of MD. In 1944 he was commissioned an ensign in the USNR and served the Navy during WW II.

Sam's wife Marion was born in Kansas and moved to Maryland where she graduated from the U of MD. Marion is an avid golfer and has been very supportive of Sam's involvement in MISGA. Sam and Marion have two children.

Milestones in Sam's life include shooting 80 on the Old Course at St. Andrews, being Associate Fellow of AIAA, serving as president of the Supersonic Wind Tunnel Association, and volunteering on the Building and Tellers Committee of his church.

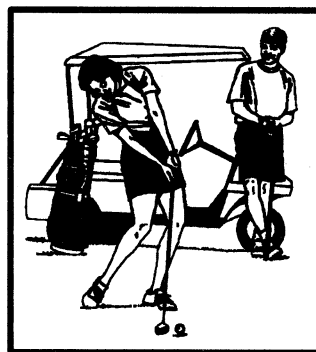
Sam's life has been one of service and fortunately, MISGA has been rewarded with his dedication.

Memories of the Past

As I think back to the early years I remember some events which were overwhelming at the time but which now seem humorous. I'll share one of those occurrences with you.

Quite a few years ago, arrangements were made by MISGA with one of the most exclusive and beautifully maintained clubs in the Ft. Meyers area to host a four-day winter event. MISGA officers and members were ecstatic over such good fortune!!!

However, on the first day when a mixer was played with the ladies, a cart driven by one of MISGA'S most esteemed members rolled into a pond while he was trying to retrieve his partner's ball from the water.



The cart with all its contents was almost completely submerged. The lovely lady accused the driver of being careless. The gentleman claimed he had parked the cart parallel to the water and had set the brakes. When he saw the cart moving and settling in the pond he could not believe his eyes!

Maintenance men arrived to pull the cart out. With the chain attached to the truck one of the workers went into the water to pull the cart out, contrary to the MISGA members' urging! Guess what! The cart was badly damaged!!!

That evening the MISGA president and treasurer were invited (summoned?) to attend a meeting of the country club board to discuss the situation. The cart problem and other issues related to MISGA members' deportment were addressed. The club said it intended to collect for damages, even if it had to resort to a law suit. The MISGA member insisted that he was not at fault and that he had no intention of paying anything because the fault was with the maintenance men. The country club president and board informed the MISGA president that they were to leave and not complete the tournament. After much discussion we were allowed to continue the tournament on a trial basis but were told that MISGA would not be welcome again.

Several weeks later the MISGA board met and decided to pay for the damages. This experience and others demonstrate the importance of exercising care when dealing with people in organized out-of-state events.

Bob Fuchs
President 1988

Gambatese, Trail Blazer

Editor Dick Hunt asked me to interview **Joe Gambatese** about the beginning of the MISGAGRAM. I tried to call him at his home in California. He hung up on me! To me, Joe had always seemed aloof. However, there's no question he did a lot to get MISGA started and was one of its true pioneers.

The very first discussions about an association of Maryland seniors included **Joe Gambatese** and **Perry Lippit**, from Kenwood; **Al Hagen** and **Ted Hayward**, from Lakewood; **John McManus** of Bethesda; **Wally Sager** from Potomac Valley; **Paul Dobrolowski** from Manor; and **Max Ryan** from Montgomery. This group met informally at Kenwood in the fall of 1975. It led to the decision to form MISGA. Joe brought to this meeting his background of having started a successful junior program at Kenwood.

For the next ten years, Joe gave his talent and expertise to MISGA'S development. He was a journalist, a writer on golf, a photographer and had served as Communications Director of the US Chamber of Commerce.

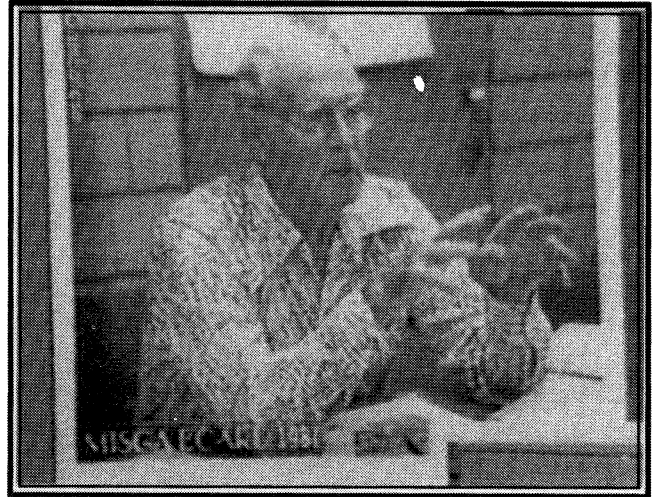
Early in '79, he and **John McManus** looked into MISGA'S finances. They recommended to the Board that each member be charged annual dues (set by the Board at \$1.50). Also, in '79, Joe and **Ted Hayward** directed MISGA'S first Communications Workshop. Earlier the Board approved their recommendation for a newsletter. The first MISGAGRAM was published in May 1978. Ted was its first editor, followed by Joe in 1980. In addition to communications, Joe added diplomacy to his service to MISGA. To mollify Eastern Shore clubs who protested the 10% levy on prizes, Joe and **John McManus** devised the MISGA Associates Program (with its dues mentioned earlier) and the board rescinded the levy on prizes in 1980.

Joe played almost exclusively with the better golfers at Kenwood, which left me out of his foursomes. No less an authority than **Bill Wohlfarth**, another pioneer, says Joe was an excellent golfer with a six or seven handicap. Bill and Joe were a two - man team to be feared in many of the early tournaments. Bill recalls one at Belle Haven during which he and Joe nailed the arrogant Virginians.

Sure, the old boy hung up on me. But he is getting on (aren't we all?) and he deserves our thanks for doing so much to get this outfit going. Wish I could have asked him a few questions though.

Bill Ahlfeld

Our First Leaders



Al Hagen, First President, At Work



MISGA Board - 1981

Seated (L to R): George Fisher, Ed Schmidt,
Al Hagen, Wally Sager

Standing (L to R): Gil Williams, Dave Watson, Bill
Woolston, Frank Buddle, Vern Mergi

(Pictures courtesy of Merle Shumaker)

Board Meeting Highlights (2/22/00)

1. Moved and passed unanimously: "Club General Managers are to be included in the MISGAGRAM mailing list"..
 2. Moved and passed unanimously: "The MISGA Board will consider at the December meeting a third Fall Frolic trip for next year".
-
-

Excerpts from Lakewood CC Newsletter

SENIOR GOLF NEWS

1975 - Lakewood Seniors took the initiative in forming a new seniors' golf association. Al Hagen, Ted Hayward and Bud Jackson, together with Joe Gervasio from the Lakewood CC Golf Committee, arranged a series of meetings with representatives of other local golf clubs which led to the formation of the association. It is now composed of: Bethesda, Brook Manor, Congressional, Eaglehead, Indian Spring, Kenwood, Lakewood, Manor, Montgomery Village, Potomac Valley and Rossmoor Country Clubs.

The purpose of the association is to promote the enjoyment of golf by its members and to give opportunity for area senior golfers to become acquainted with each other.

1976 - Tuesday, November 23rd Lakewood will host 68 representatives from about 34 Maryland country clubs who have been invited to join the Maryland Interclub Seniors Golf Association (MISGA). At least 23 clubs are expected to join. This means that seniors in these clubs will be more formally organized and have opportunities to participate in interclub tournaments called "Mixers".



1977 - Fifteen Lakewood CC couples joined 24 others from MISGA in a Spring Fling at Myrtle Beach. The outing was so successful that a committee is already working on the 1978 Spring Fling. Also, don't forget the MISGA tournament on September 23 at

Lakewood.

1977 - On Friday, September 23rd, the Maryland Interclub Seniors Golf Association will have its annual "Mixer". Because a field of 250 golfers is expected, play will be at two clubs, Lakewood and Montgomery. The annual dinner and award of prizes for all participants will be held at Lakewood that evening.

1978 - In the Maryland Interclub Seniors Golf Association Fall Tournament, our club had the largest number of participants among the 21 clubs represented.Seniors who are interested in attending MISGA'S Spring Fling to Myrtle Beach are invited to read the seniors' bulletin board for details.

1979 - BIG NEWS!!: Mixers expand to Eastern Shore. August 14, Eastern Shore at Kenwood and Argyle. August 15, Eastern Shore at Lakewood and Montgomery Village. September 24 and 25, we go to Talbott Country Club in Easton and Caroline Country Club in Denton. Watch the bulletin board for details.

1979 - CONGRATULATIONS! Lakewood seniors performed very well at the Annual Maryland Interclub State Golf Association Fall Tournament (MISGA) 1st Low Net: Al Hagen and Al Slater - 2nd Low Gross: Larry Masoner and Jim Peelman.

Courtesy of Ed Harkleroad

Special Events

Since 1977 MISGA has organized special golf events outside the state and the US for the associates and their guests. The MISGA history recounts the highlights of the first 20 years. Included are trips to Myrtle Beach, Callaway Gardens, Foxfire, the Bahamas, Mexico, Ft. Meyers, Scotland, Jekyll Island, Carroll Valley, Pinehurst, Grenelefe, Cape Coral, Sea Trail, Seabrook and Santee. Similar events have been held during the past 5 years.

The Fall Frolics in the Carolinas have been attended and enjoyed for more than ten years. MISGA has seen Sea Trail at Sunset Beach, NC grow, mature and prosper. We opened the Jones-Byrd Clubhouse and most recently saw the new 30,000 sq. ft. convention center approach completion.

Seabrook and Jekyll Island are favorite locations for the Fall Frolics. Seabrook's cuisine is superb and the setting of the banquet facility, practically in the ocean, provides unparalleled sights at sunset. Its Crooked Oaks course was rebuilt last year and we look forward to its new challenges this Fall.

Jekyll Island is a unique, state-owned resort area. Its historic district is most interesting. The ferry to Sea Island is fun and the fishing pier and beaches are excellent. The 3 1/2 course golf complex is well maintained and operated and the courses are challenging. Our "home base" this year will be the Jekyll Island Inn.

Other venues which have been enjoyed in the recent past are Cape Coral, Fripp Island, Woodlake and Sunset Beach.

The non-golfers also enjoy the Fall Frolics. Many of their planned sightseeing trips have proven interesting and enjoyable. These groups have visited the Battleship North Carolina, Brookgreen Gardens, Orton Plantation, Fort Fisher, the Maritime Museum and historic Wilmington, Charleston, Georgetown, Conway and Jekyll Island. The many shows at Branson (really Myrtle Beach and North Myrtle Beach) have provided great entertainment. These ladies have cruised the Waccamaw and Cape Fear Rivers and the Intercoastal Waterway. One lucky group was invited aboard a visiting British flattop in Wilmington, NC for lunch. And of course they have made time to shop, shop and shop!

The most fun is had by the nine-hole ladies. In addition to golf they have exotic lunches in neat places while continuing their insatiable quest for the perfect Margarita.

MISGA'S most recent trips to Scotland, Ireland and Costa Rica (see article herein) are noteworthy as well



as our Caribbean cruise. Scotland is never a disappointment regardless of the weather, which in our case was bonny. The golf courses provide spectacular vistas and challenges that are the stuff of life-long memories.

Thinking of the history of play on the St. Andrews Old Course, it is a mighty thrill to tee it up and play in the shadow of the Royal and Ancient. Each of the courses played, Royal Dornach, Carnoustie, The Dukes Course, Ailsa and Troon left its unique impressions. And who can forget the vast pageantry and sounds of the Military Tattoo in Edinburgh Castle's Esplanades, truly a soul stirring spectacle. A fitting finale was the sumptuous banquet at Turnberry enhanced by the Haggis ceremony. The Haggis on its gleaming silver platter is held high as it enters the room preceded by a piper in full regalia. After circling the table the piper recites the famous Robert Burns poem saluting the Haggis.

Irish courses are the equal of those in Scotland. We were fortunate to have a few days in Northern Ireland to play Royal County Down. It is one of the most scenic courses in the world being nicely situated between the Mourne Mountains and the Irish Sea. Also played was Royal Portrush, another of Ireland's "big four", which has a commanding view of the coastline and channel between Scotland and Ireland. In Dublin the Irish Cabaret, a dinner revue of Irish music, dancing and humor was most entertaining. The

trip along the Ring of Kerry, to play at Waterville, is one of Europe's most scenic drives. Rounding out the golf was play at Tralee, Ballybunion, Adare Manor and Lahinch (the St. Andrews of Ireland). No visit to Ireland would be complete without seeing the Book Of Kells, Ireland's greatest treasure and one of the most important illuminated manuscripts still in existence, the Cliffs of Moher and kissing the Blarney Stone. Our stay at Adare Manor was special. Located on an estate of some 840 acres forested by magnificent, huge, ancient trees and through which the River Maigue runs, the Manor is a castle by US standards. It has been refurbished and enlarged as a luxury hotel and offers the very finest in country living. The Mustard Seed, one of Ireland's best restaurants, prepared a memorable farewell banquet.

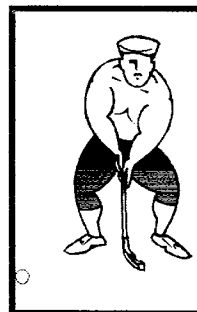
These special events have provided much enjoyment, and many lasting memories for participants as well as fostered numerous friendships.

In the "planning and thought" stages are trips to Panama, Portugal and the Yucatan. New Fall Frolic sites may be Virginia Beach, Mid-Pines, Pinehurst or Lake Lure. Try one of these, you'll not be disappointed.

Sam Hastings

These Guys Were Good!

Sometime in the 70's, on the 124 yd. par 3 12th hole at Hunt Valley, my team made *four birdies!*



It was during an A-B-C-D Mixer. As I recall, the cup was pretty well surrounded by the four balls, with the longest putt about eight feet. My memory fails me about who was in the foursome. I can't even remember the names of the guys I played with yesterday, or even which club was visiting that day! There is no way to verify that it really happened unless someone on the team comes forward.

So, with such a good Ripley "believe it or not" item, why wasn't it publicized? Well, the team wasn't in the money, and we were just too dumb to brag about it - or maybe too embarrassed to admit it!!

Dick Allchin

A MODEL MISGA GOLFER

Name: Fred Gianiny

Club: Argyle Country Club, Division 4

MISGA Associate: 25 years ('76 - '00)

Age: 80

Index: 8.1 **Home Handicap:** 9

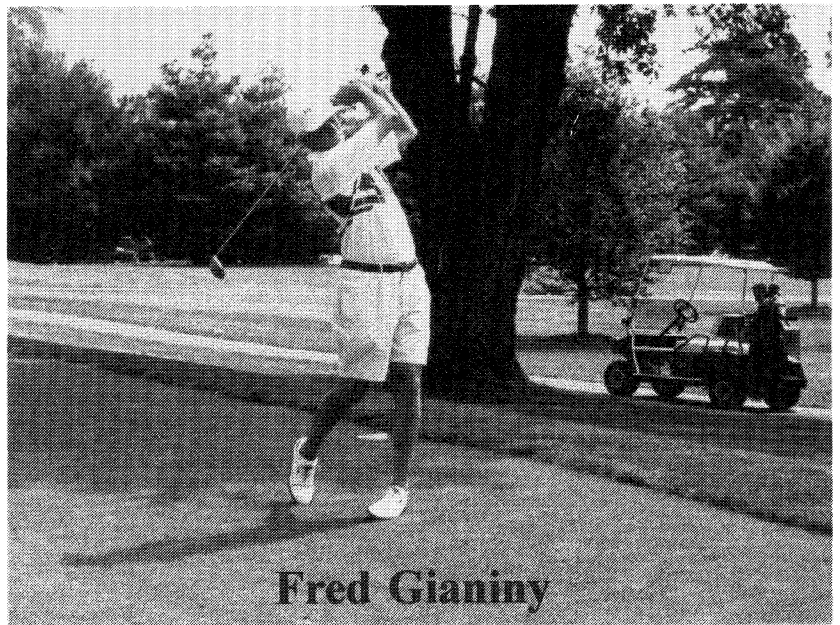
Shot his age or better this year: 15 times

Senior Club Champion: '86, '87, '91, '97

Seen on the range & putting green: at
least 4 times a week, year round

By Acclamation: Best-dressed senior
golfer

Attitude: Always a smile and a wave
Chuck Ebbecke, Argyle



Fred Gianiny



This 1977 photo was taken at the Elks Club on the Eastern Shore. The men above participated in the first MISGA tournament played on the Eastern Shore between the Elks Club and Cambridge CC.

Picture courtesy of Allen Eckel, Cambridge CC

MISGA WELCOMES TWO NEW GOLF CLUBS

BAY HILLS

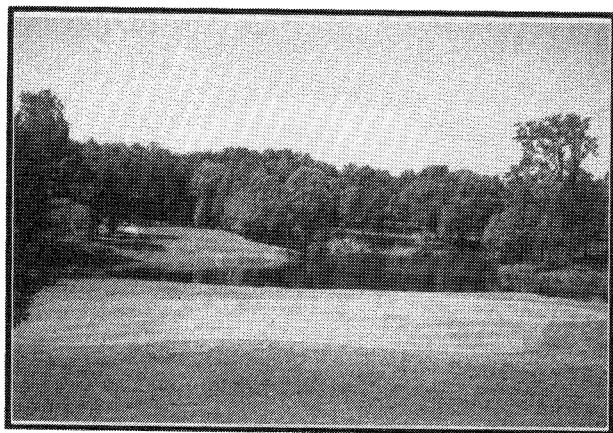
Bay Hills Golf Club begins its inaugural season with MISGA this year. Located in Arnold, MD, halfway between Annapolis and Severna Park, Bay Hills has been placed in Division III. First opened in the spring of 1969, the club was purchased in 1998 by Arnold Palmer Management.

Designed by Ed Ault, Bay Hills is a scenic 18-hole course, completely irrigated from tee to green. The character of the course lies in the natural beauty of its wooded and gently rolling terrain. Six doglegs, fifty plus bunkers and water coming into play on eleven of the holes, combine to place a premium on strategy and placement. Large greens and tees offer a wide variety of challenges and course length. Bay Hills is one of the few courses in the Mid-Atlantic region with Zoysia grass fairways. Course yardage is ideally suited for senior golfers. The white tees are 5705 yards, blue tees 6057 and gold tees 6423.

The clubhouse features a 50-foot long, glass-enclosed sundeck which overlooks four holes and two lakes. The facility has a fully stocked pro shop, men's and women's locker rooms, bar, clubroom and meeting room.

The club is managed by Scott Sawyer. The head golf professional is Kevin Watters. Serving as the first MISGA Rep will be longtime Bay Hills member Hamilton "Ham" Nunnally.

Sam Hall

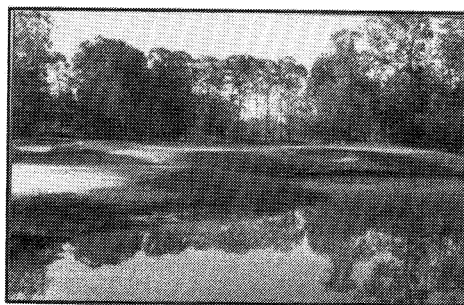


Number 18 is the favorite hole at Bay Hills because of the intimidation factor, created by the water hazard between the tee and green. This par three hole is 153 yds. from an elevated tee and concentration is a must. 41 holes-in-one have been recorded here but one determined member scored 30. It is a finishing hole that offers great opportunity, especially by avoiding the intimidation factor.

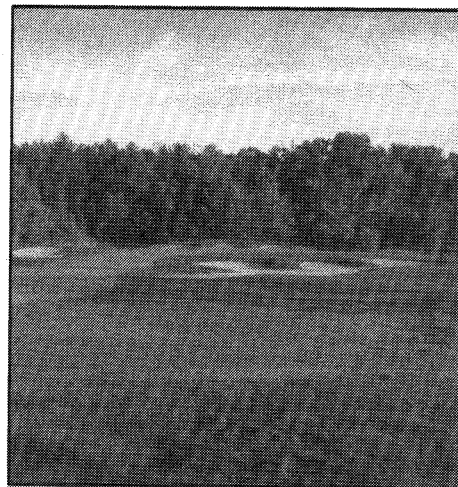
THE BEACHCLUB

Situated near Ocean City, The Beach Club offers thirty-six holes of beautiful, unspoiled nature and wildlife which you can enjoy as you relax during your round of golf.

The classic interlinks eighteen offers a park-like setting of wide fairways that allows for recovery even with an errant tee shot. It features six imposing lakes as it meanders through mature forests.



The contemporary outerlinks challenge your shotmaking skills. They require intelligent assessment of the layout that is rated by the USGA as the area's most difficult new course. You will be impressed with its breathtaking beauty.



Designed and created by renowned architect, Brian Ault, the Beach Club Golf Links are waiting to test your game. With four sets of tees varying the yardage from 5167 to 7020 yards, it is truly a welcome addition to MISGA.

The resident Pro is Hunt Crosby and the MISGA Rep is Harry Nolen.

Jack Nichols

Manor wins MISGA Championship - 1977



Pictured above are the members of Manor's 1977 MISGA champion team being presented the winner's plaque by Al Hagen, first president and founder of MISGA.

L to R: Carl Burrows, Chris Smith, Spence King, Paul Dobrolowski, Tom Brook, Al Hagen (Lakewood), Frank Coyle, Reds Deel, Frank Geibel.
(Picture courtesy of CJ Myers, Manor CC)

Newspaper Clippings - 1980

THE SUN, Saturday, September 27, 1980

Sparrows Point golfers win

Silver Spring (Special)—The teams of Otis Covell and Al Criswald and Frank Bucuarewicz and John Spann, all of Sparrows Point, combined for a score of 123 to win the Maryland Interclub Seniors Golf Association 5th Annual Championship yesterday at Argyle C.C.. The Sparrows Point teams tied with the Kenwood teams of Lou Semia and Farold Norris and Max Bost and Harry Ockershausen, but won the title by matching cards.

THE WASHINGTON POST

Saturday, September 27, 1980

MARYLAND INTERCLUB SENIOR GOLF ASSN. ARGYLE—Max Bost and Harry Ockershausen of Kenwood won gross in a match of cards over Lou Semia and Varrell Norris of Kenwood after both twosomes shot 72. Dave Brooks and George Boyd of Leisure World won net, 56.

STAR SEPT. 27, 1980

MARYLAND INTER-CLUB SENIOR GOLF CHAMPIONSHIPS

Two-Man Team Gross Best Ball
At Argyle CC

Max Bost, Harry Ockershausen, Kenwood, 72 def. Lou Semia and Farold Norris, Kenwood, 72

Two-Man Team Net Best Ball

Dave Brooks and George Boyd, Leisure World, 56

Four-Man Team Net

Al Criswald, Otis Covell, Frank Bucuarewicz, John Spann, Sparrows Point, 123, def. Max Bost, Harry Ockershausen, Lou Semia, Farold Norris, Kenwood, 123.

Letters to the editor

Dear Dick,

The 18th hole at Prospect Bay could be the best par 5 on the Eastern Shore. As described by Mr. Jim Sylvanus, it offers all the challenges of golf. It has ruined more rounds than any finishing hole I have ever seen. My observations and comments are:

- Heavy woods down both sides, offering a slight dogleg left.
- Three shot hole from any tee marker, with the approach to the green having a 90 yd. carry over water
- Fairway bunker off the tee, and green is well-guarded with 4 strategically placed bunkers.
- Each shot requires precision accuracy with maximum distance or hole cannot be reached in regulation.
- Many hours have been spent in committee meetings trying to figure out a way to reroute the back 9 for a better flow or easier finish but nothing ever changes because the majority of the membership feels it is one of the greatest finishes in golf.
- The 1993 Maryland Open was held at Prospect Bay, and in an article written in the Baltimore Sun it said, "Prospect Bay has the best four finishing holes in Maryland capped off with the par 5 18th".



**Bill Horney, Head PGA Professional
Prospect Bay**

Dear Dick,

This letter is in response to Dick Dale's comments in the November MISGAGRAM.

This was my first year as a member of MISGA and I found it both enjoyable and rewarding. I am a HIGH handicapper (42 and no sandbagging). Frequently, I felt that I was more of a hurdle to my team than an asset. But even when I was struggling to get a double bogie or worse, the other team members were encouraging me all the way. That's what I thought the game was all about, not being No. 1 and certainly not about money. Just playing the best you can and enjoying the game. While my teams have placed 1st, 2nd, and 3rd during the season, most of the time we were 5th and below. For the most part, my high handicap was not an advantage because my game actually reflects my handicap.

I have a lower back injury from the military. When the pain kicks in, everything else goes wacky, golf swing and all. That is part of the reason for my high handicap. But that does not stop me from enjoying the game, even when I post a 110 or 122. My point here is that 100% of handicap seems fair when everyone is honest with his scores. On the other hand, when it is found that someone is manipulating his scores. There should be some kind of sanction.

For example under the Rules of Golf Rule 6-6d, when a competitor enters and attests to a lower score than actually played, he/she shall be disqualified. However, if a higher score is taken, the score shall stand. What we need to discourage "sandbagging" is a rule that is the reverse of 6-6d because the players are recording higher scores in order to drive their handicaps up and then playing a substantially better round than their handicap would indicate. Some people are so intent on "winning" that they fail to see the enjoyment derived from just playing the game.

In any event, nothing short of a new back will help my game very much. But I do enjoy playing at the different clubs and meeting people around the area. I'm looking forward to the next season and all the wonderful tips players have so graciously offered me.

Martin Green, Garrisons Lake CC

Dufferstats.com-what is it?

Have you ever looked at the stats for the PGA tour golfers in the papers and wondered how you would compare to them? For example, the top pros average about 1.75 putts per greens reached in regulation. What is your average? Or, the pros have sand save percentages as high as 75%. How do you compare? Even if you haven't thought about how you would compare to the pros, do you ever wonder how you compare to others at your club or to the "average" golfer or to all MISGA golfers? If you've ever thought about these things, you are a candidate for dufferstats.com. As the name implies, dufferstats.com is an Internet web site that specializes in golf statistics.

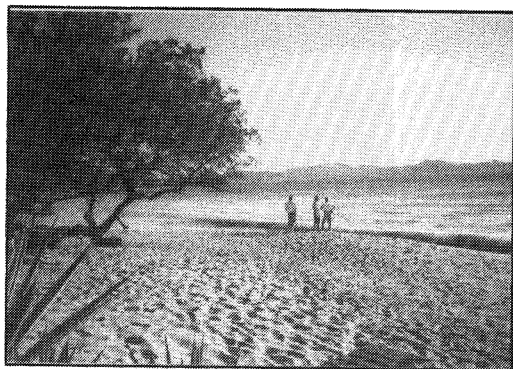
There are many golf sites on the Internet that specialize in golf statistics. At most of these sites you can get GIR % driving accuracy (% of fairways hit), sand save %, average score, average putts per round and others. With dufferstats.com you also get all these, but the unique aspect of dufferstats.com is the ability to compare yourself to other golfers. For example, you can compare yourself to all other men in the data base or all other senior men in the database. Or, you could form a special group. Special groups are of two types - closed and open. A closed group would be a foursome where the person forming the group establishes who can join the group by name. An example of an open group would be the members of a particular golf club where the only criteria to join the special group would be to be a member of that club. Another example of an open group is MISGA. I have formed a MISGA group and any MISGA member can join and be compared to other MISGA members who also join. When you are part of a special group, you would get the statistics described above as well as a pro-like "All Around Ranking". This is where you add up your ranking in the different categories and the lowest total is the top ranked golfer in the group.

It's a lot of fun and even helps improve your game. The ability to make the comparisons offered by dufferstats.com depends on getting enough scores to make it meaningful. So, dufferstats.com is offering a six month trial membership to all MISGA members. If interested, contact me at coew@boo.net or call me at 301-929-1843.

Bill Coe, Manor CC

COSTA RICA TRIP

Twenty-three men and women of MISGA'S foreign legion trekked to Costa Rica Feb. 19 - 26 for four

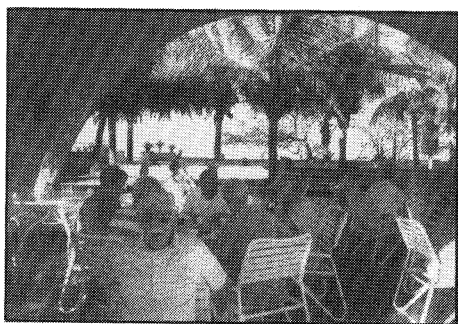


rounds of golf, two in the uplands of San Jose and two at hot and sere Flamingo Beach on the Pacific. Wind was a common discomfort but the

courses ranged from good to great, with Melia Playa Conchal the best.

In between were tourist sights and stops, including the mountain rain forest at El Tucano (it really pours there) and Tabacon hot springs near the active Arenal volcano. The 90-degree plus water cascaded over the small waterfalls and through several pools for everyone's pleasure, but unfortunately, clouds hid Arenal that day.

Costa Rica is the most developed of the Central American countries but there is plenty of adventure to be had , from driving the winding, mountain roads (you think we got potholes?) to flying from an airstrip



whose technology was a tattered windsock . The plane that was to take us back to San Jose failed to show, but after a couple of hours, two planes arrived, a five-seater (Charlie

Platzer, Prospect Bay, served as copilot) and an 18-seater (two pilots). Once airborne we were treated with a spectacular view of the country.

Our tour guide was excellent, the food was good and being able to drink the water was a blessing.

Highlight of the golfing expedition was Commandante Sam "the Hybrid" Hastings holing out from 180 yards - maybe even 190 yards - for par on a 600-hard uphill par 5. Marcia Stromberg, until recently from Kenwood, was the "winningest" golfer, being in the money every day.

Bob Toth

Deceased Members

Douglas Moats passed away on March 21, 2000. Doug was involved in MISGA for many years. He had a long service as Club Rep at Montgomery Country Club, was Tournament Director beginning in 1986, Division IV Director, and finally MISGA President in 1994. His dedication to MISGA was inspiring and all who knew him and his humor will miss him.

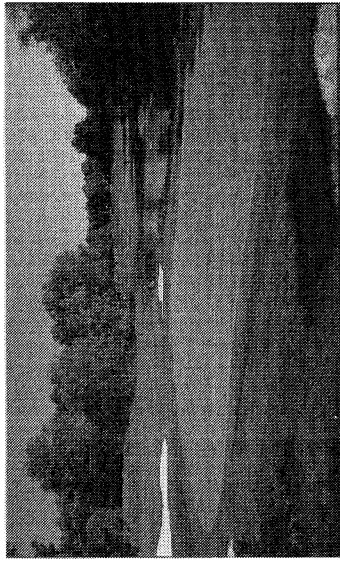
Bob McMinn

Harry Decker, avid golfer, Frederick County historian and one of the founding fathers of MISGA at Holly Hills recently passed away . For those who remember Harry personally, I am sure you will think of him kindly as you cross or fall short or take a bath in "Decker's" creek in front of the 18th tee box at Holly Hills!! Harry will be missed and warmly remembered.

Tom Tarpley

Argyle	Ken Nagel, Jr.
Bethesda	Sam DeSanto Carroll Morgan Lawrence Hartwig William Fleming
Harbourtowne	Fred Utterbuck
Kenwood	Ray Keany John Kuchta Edward Thrasher Walter Johnson Klon Row
Lakewood	Pasquale Morra
Leisure world	Jack Ludwick
Montgomery Village	William Barber
Nassawango	Maurice Bradford
Ocean City	Bill Gaffney
Prospect Bay	Herb Brown
Quail Valley	Art Carey
Seaford	Lee Fleetwood
Wild Quail	Bill Henshaw

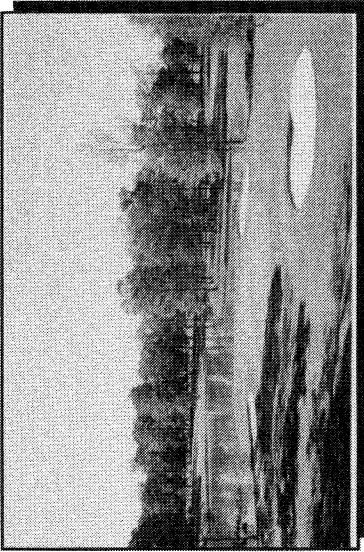
Some Favorite Golf Holes



28. Crofton - No. 12

Crofton - Hole No. 12 - Par 3 - 192 Yds

Hole number 12 at the Crofton Country Club is the signature hole. A par 3 over water, it plays from 192 yds. from the back tees to 150 yds. for the seniors. Keep your mid to long irons sharp when playing this hole.



29. Ocean City G&Y Club - No. 12

Ocean City Golf & Yacht Club - Hole No. 12 - Par 3 - 191 Yds

A very picturesque, straight but narrow 191 yd. par 3. Bunkers guard the green on the left and right of the green. You want to guard against pulling the ball left because of the well-bunkered green. Just hit your tee shot solid and straight and it should yield a good score.



30. Navy Golf Club - No. 7

Navy Golf Club - Hole No. 7 - Par 3 - 172 Yds.

Hole No. 7 is a par three across water to an elevated green. The tip here is to pick the club that will get the ball to the center of the green because the green is like a bowl that tips toward the water. All balls roll toward the center and to the front of the green. The hole has two deep sand traps on either side of the green and it's difficult to get close to the pin.



31. Manor - No. 1

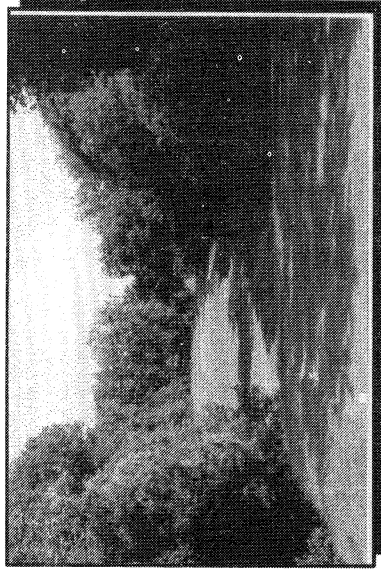
Manor - Hole No. 1 - 350 Yds.

One of the pleasures of playing Manor is the scenic beauty of the first hole. The elevated and beautifully landscaped tee overlooks the narrow and tree-lined fairway with out of bounds on the right and tree trouble on the left. The heavy rough on the right adds to the challenge of reaching the green with its well guarded traps. Pin placement can add twenty yards to the length of the hole.

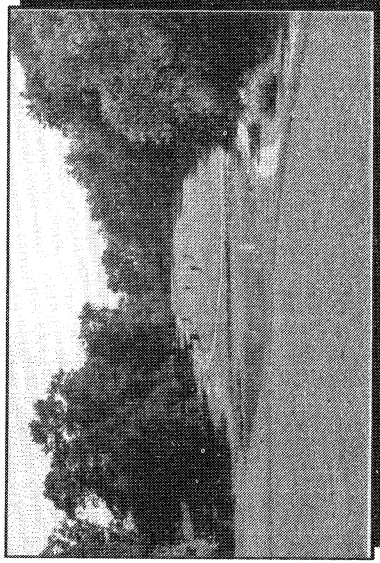
Marlborough - Hole No. 15 - Par 3 - 144 Yds.

The fifteenth hole at Marlborough is a beautiful par 3. This unique hole is surrounded on three sides by water and is also well- trapped on the right and left sides. A large, rolling green makes a close tee shot necessary for a realistic birdie putt.
(Picture not available)

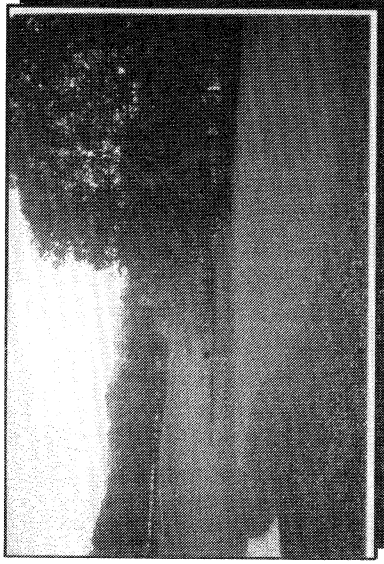
Some Favorite Golf Holes



1. Tantallon - No. 6



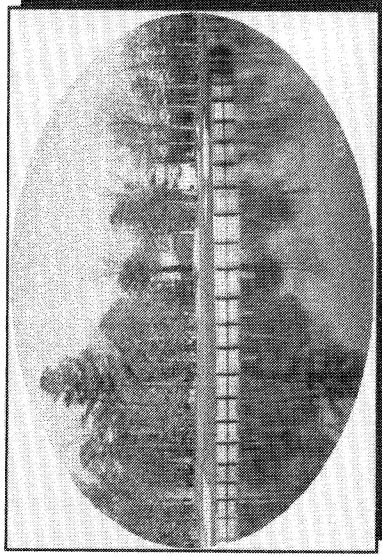
2. Bowie - No. 15



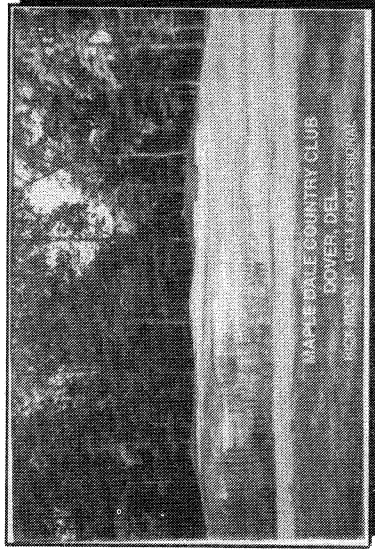
3. Univ. of MD. - No. 2



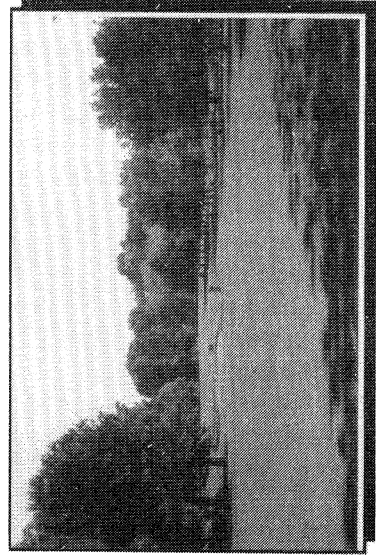
4. Patuxent Greens - No. 9



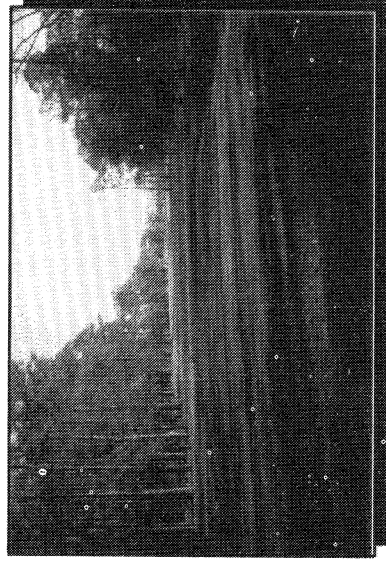
5. Prospect Bay - No. 18



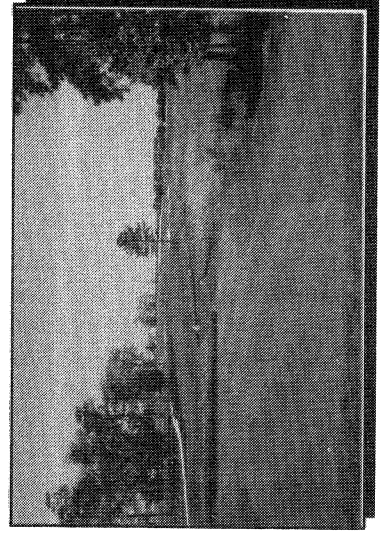
6. Maple Dale - No. 3



7. Garrisons Lake - No. 12



8. Ocean Pines - No. 9



9. Cripple Creek - No. 5

Golf Hole Descriptions

Tantallion - Hole No. 6 - Par 3 - 197 Yds.

Many of TCC's members affectionately refer to hole #6 as "the shortest par 5 on the East Coast". It's the #1 handicap hole. It requires a drive from an elevated tee across a valley onto an elevated green. The fairway is narrow and bounded by woods on the left and right. If you hit a long fade you might be in a sand trap or a ditch. Putting from a higher level tier to a lower level will torque your cheeks. Although not the most scenic hole on Tantallion, it is definitely the most notorious hole.

Bowie - Hole No. 15 - Par 4 - 280 Yds

"The Scenic Dare" - A short but challenging hole, requiring only 130 yds. to clear the pond. A slice is out of bounds - a hook lands you among the trees. A fairway bunker guarding much of the front of the green is your lot with a short approach shot. A two-tiered green adds to the challenge, but birdies are very possible on this our most picturesque hole.

Univ. of MD. - Hole No. 2 - Par 4 - 440 Yds

The number one handicap hole at the University of Maryland golf course is long and tough. It clearly meets its number one handicap rating. In addition to length, there is water on the left which comes into play off the tee. The green is long (about 35 yds.) and narrow. An accurate shot to the green is necessary to avoid traps on the right and left. The tree-lined fairway makes it a beautiful hole, particularly in the fall.

Patuxent Greens - Hole No. 9 - Par 4 - 393 Yds.

This hole is one of the more interesting holes at Patuxent Greens. The tee is elevated, presenting a frightening view over water to a dogleg right with out of bounds on the right. A carry of 150/160 yds. is needed to clear water, but a bailout left is available for shorter hitters. There are tall trees on the right beyond the water, and more water to the left of the fairway at 175 yds. from the tee and continuing to 80 yds. from the green. Five is not a bad score. The reward for an aggressive shot is so good that strong players seldom wimp out, but frequently pay the price.

Prospect Bay - Hole No. 18 - Par 5 - 533 Yds

The fairway is bordered by woods on each side with out of bounds markers about 10 yds. into the woods on the left side. A large sand bunker is located off the left edge of the fairway approximately 220 yds. from the tee. The green is surrounded by a pond on three sides - front, right and rear. Carry to the green is 90 yds. over water. The green has sand bunkers right front and rear, back and left side. To reach the green in regulation it takes a strong drive (200 yds.), 180 to 200 yd. second shot, with a third shot over the water to the green.

Maple Dale - Hole No. 3 - Par 3 - 160 Yds

A lake covers the left half of the fairway with trees on the left of the lake. The fairway to the right side of the lake is accessible but not very wide. Two large clumps of beach grass sit just short of the fairway on mounds and catch shots short of the fairway. The right side of the fairway is wooded with a sharply sloping bank to the right of the green. A large, deep, sand trap catches shots which clear the lake but do not catch the green. A well-placed shot below the hole is required for any hope of birdie. Due to the slope of the green, three putts are easy.

Garrisons Lake - Hole No. 12 - Par 5 - 471 yds.

Number 12 is a tree-lined, dogleg left, par 5 with a pond on the left side of the fairway just past the bend. The fairway continually rises very slightly from the regular tee for about 170 yds. and then gradually drops and levels out at the dogleg, about 246 yds. from the tee. It stays level for about 75 yds. and then steadily rises to a sloped green. Two sand traps guard the middle and rear right side of the green, requiring an accurate shot to the green. Although short, the hole requires good course management - the reward may be a birdie.

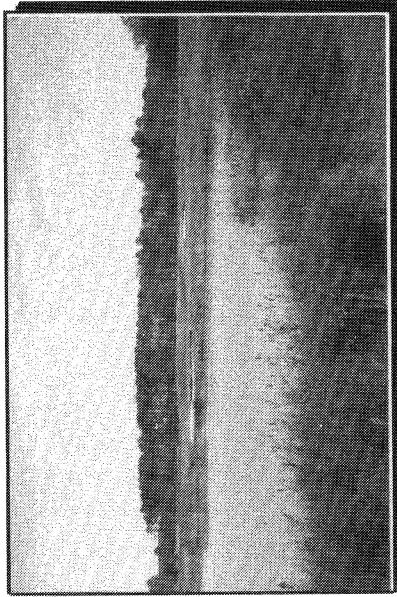
Ocean Pines - Hole No. 9 - Par 4 - 391 Yds

Straight, narrow and long! The ninth hole at Ocean Pines will challenge the best of golfers and provides classic beauty at the beach. There is water on the left and out of bounds on the right. Please be accurate! There are no easy pars here.

Cripple Creek - Hole No. 5 - Par 5 - 506 Yds

This is one of the most challenging and difficult holes at Cripple Creek. It is set against the quiet beauty of the rugged, natural terrain of the wetlands on the left, and sand traps and trees on the right. A perfect tee shot is required. On your second shot you have the same conditions plus the addition of a lagoon on the left and in front of the green. On your third shot, you must hit a long, narrow and fast green. The hole is long, tight and has many hazards that will test your golfing skills.

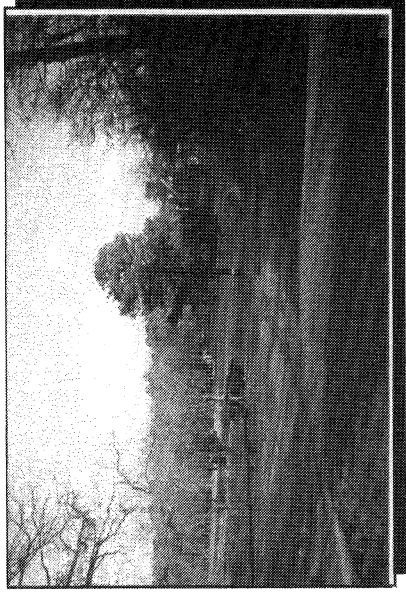
Some Favorite Golf Holes



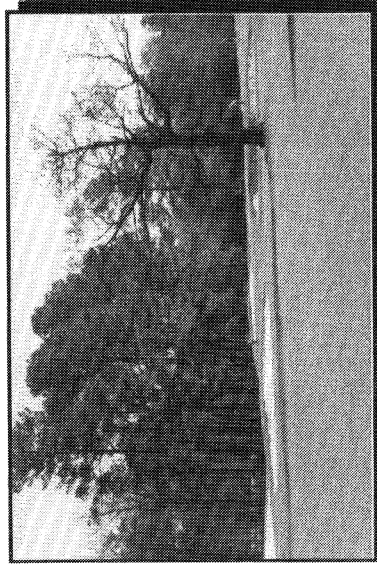
10. Great Hope - No. 7



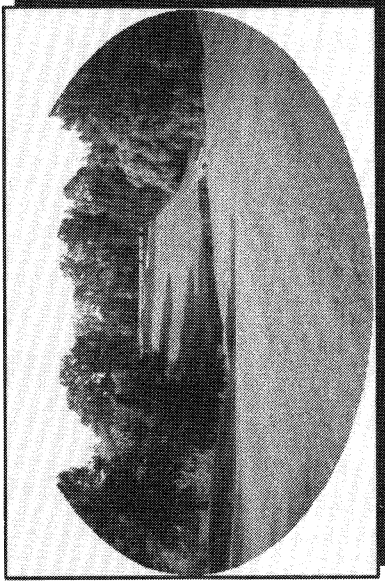
11. Eastern Shore - No. 11



12. Salisbury Elks - No. 18



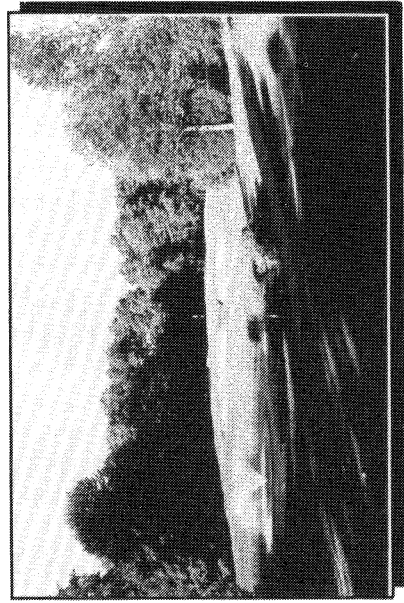
13. Sussex Pines - No. 4



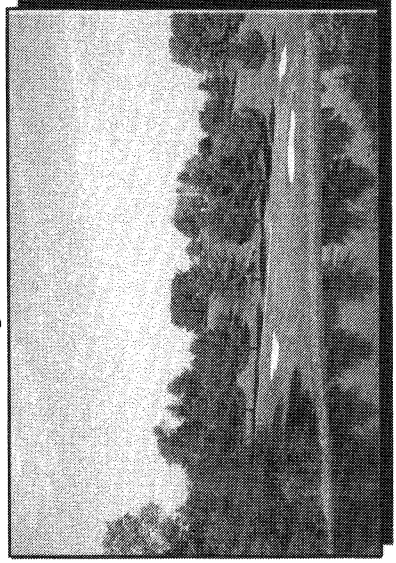
14. Rolling Road - No. 16



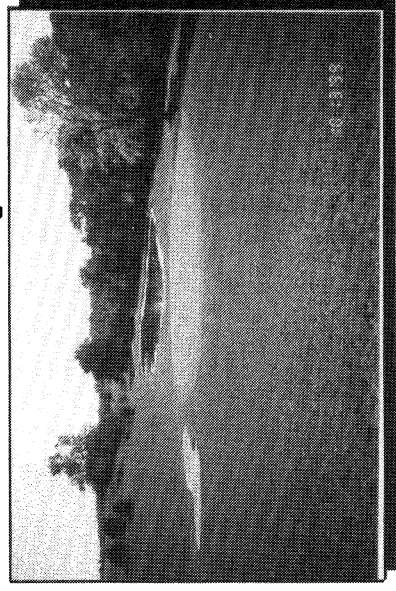
15. Nutters Crossing - No. 3



16. Green Hill - No. 8



17. Piney Branch - No. 7



18. Holly Hills - No. 7

Golf Hole Descriptions

Great Hope - Hole No. 7 - Par 3 - 167 Yds.

The challenging par 3 encompasses many of the aspects found at Great Hope. This hole requires a carry over a large pond which extends from the tee box to just short of the green. The green itself is large, sloping from back to front. It is bunkered front left and back right with a grass bunker back left as well. All in all, a beautiful and challenging hole.

Sussex Pines - Hole No. 4 - Par 5 - 506 Yds.

If this hole ever needed a name, players would have chosen "The Intimidator". The tee shot requires hitting across a lake (170 yds. carry) with out of bounds to the right. The second shot is a lay-up toward bunkers that guard the right and left and a 75 foot tree in the center. A two-tiered green trapped on the center and left with out of bounds on the right awaits the golfer's approach shot. An intimidating hole!!!

Green Hill - Hole No. 8 - Par 3 - 185 Yds.

This slightly uphill hole has a carry over water and generally plays into a prevailing wind, making it play much longer. The green slopes from back to front with a ridge that divides the green in two and puts a premium on club selection. It is also surrounded by four deep bunkers which capture a stray ball. When this hole plays with the wind, birdies can be made but into the wind par is a very good score.

Eastern Shore - Hole No. 11- Par 4 - 404 Yds.

A beautiful, classic golf hole with water, trees, sand and wind. The tee shot is a carry over water to a fairway guarded on the left by trees and on the right by Taylor Creek. A good drive will leave you with a mid iron, but into the prevailing wind, a long iron or a fairway wood will be needed. The approach shot must be hit well to carry the slightly raised green guarded left and right by traps. The green slopes from back to front making putting or chipping from above the hole very tricky.

Rolling Road - Hole No. 16 - Par 4 - 435 Yds.

The 16th hole at Rolling Road Golf Club has been described by several sports writers as one of the most challenging, demanding and picturesque golf holes in the state of Maryland. After a long and accurate drive, most golfers must play a short lay-up shot to the bottom of the hill where a small stream awaits the more aggressive hitter. Once on the green, pin location does not relieve you of facing one of the most difficult greens to putt.

Piney Branch - Hole No. 7 - Par 3 - 170 Yds.

The seventh hole is a long par 3 guarded by traps in front and on the left and right sides of the green. The elevated tee shows a beautiful panoramic view of the hole and the large lake extending from the downslope of the tee box to near the green edge. The golfer is challenged with a long iron or a high wood shot which has to carry the lake to the green. Prevailing winds are usually in the golfer's face which adds to the difficulty of the shot. Sloped from back to front, the green is not severe and offers good putters a chance for a bird.

Salisbury Elks - Hole No. 18 - Par 4 - 297 Yds.

Although short in yardage, this par 4 requires an accurate tee shot over a sixty foot pine tree directly in line with a landing area 150 yds. from the tee. To have a clear second shot of about 135 to 150 yds. requires landing in an area about 20 yds. in width between a water hazard on your left and a steep hill on your right. The green is well-bunkered and slopes from right to left. Pin placements can make birdies very difficult.

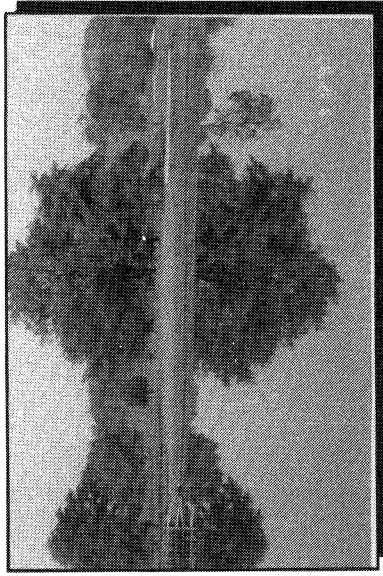
Nutters Crossing - Hole No. 3 - Par 3 - 201 Yds.

This hole will challenge the skills of even the low handicapper. Go right and you may end up behind a tree or in one of two, deep, green side bunkers. Go long and you are in the deep rough back of the green. Go left and you may be in a large bunker or hit the cart path and end up near the club house. The undulating green helps to keep a three putt in the back of your mind. Make par here and you tip toe off the green, *pat your bag and kiss your putter.*

Holly Hills - Hole No. 7 - Par 3 - 167 Yds.

This picturesque par 3 hole requires a shot almost entirely over water to the green with hazards to the right and left. We chose this hole for its beauty and difficulty. However, anyone who has played Holly Hills cannot forget the sign after the completion of hole No. 6 (Par 4, 437yds.) and the sign on the bridge after completion of the hole that says "The toughest hole in western civilization" - Golf Digest 6/22/90.

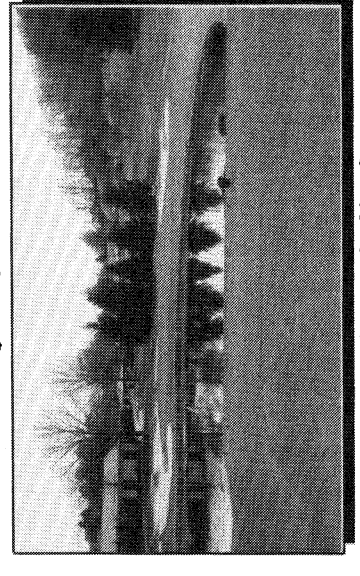
Some Favorite Golf Holes



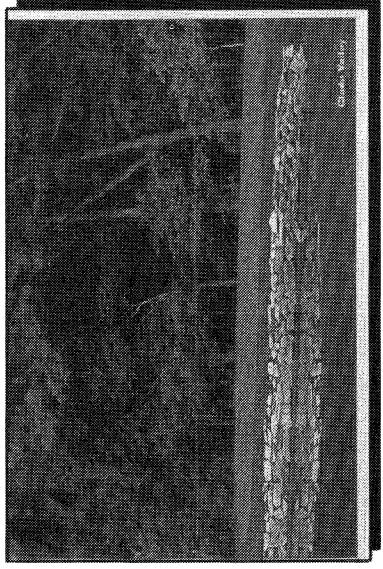
19. Wakefield Valley - No. 8



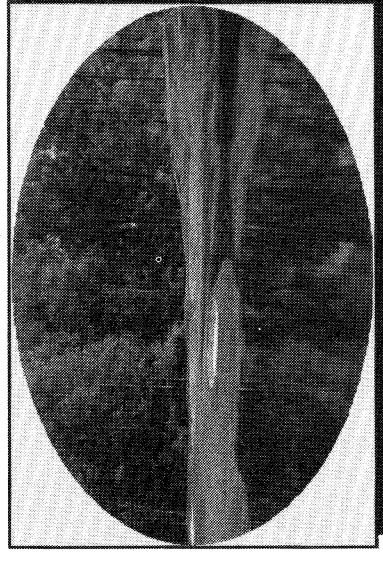
22 Montgomery C.C. - No. 13



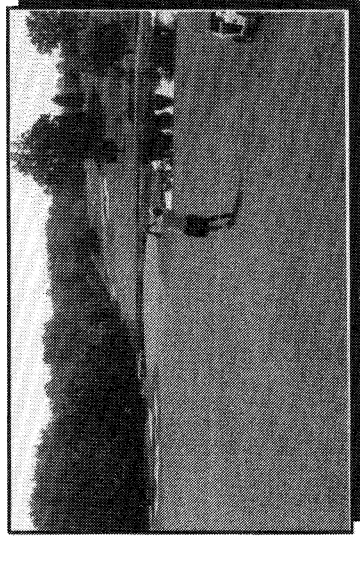
25. Lakewood - No. 9



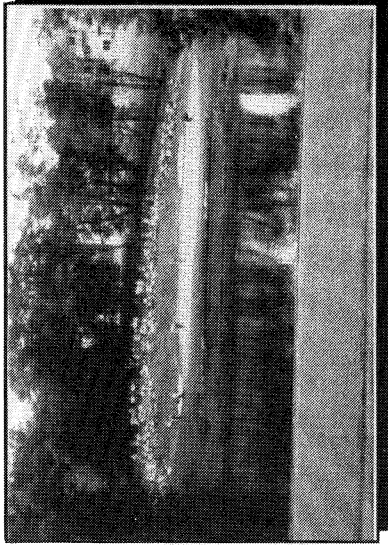
20. Glade Valley - No. 14



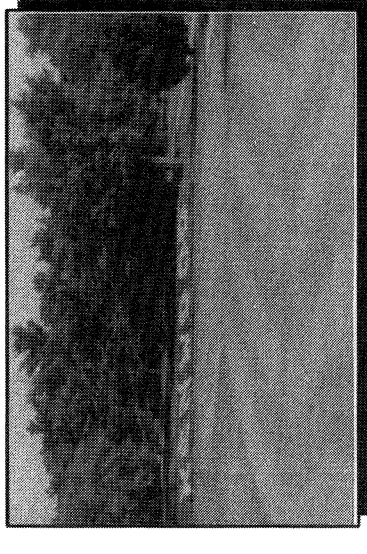
23. Bethesda - No. 17



26. Argyle - No. 12



21. Hobbits Glen - No. 11



24. Kenwood - No. 15



27. Norbeck - No. 3

Golf Hole Descriptions

Wakefield Valley - Hole No 8 - Par 3 - 145 Yds.

The eighth hole on the Wakefield gold Course is an island par 3. This is a beautiful, scenic hole. The tee shot is all carry over water to a domed green. It is an easy hole to make a high score. Par is an excellent score here.

Glade Valley - Hole No. 14 - Par 4 - 312 Yds.

This is the most interesting hole at Glade Valley. You approach this hole on the winding cart path through a small woods. The tee is beautifully landscaped with local ferns and flowers. There is usually a redheaded woodpecker and squirrels scampering in the leaves. The tee shot must clear a funnel of trees. A slight fade puts one in line for a clear second shot to the long, narrow green bordered by a natural stone-walled pond on the left and a dense woods on the right. A par on this hole is cherished!

Montgomery C.C. - Hole No. 13 - Par 5 - 467 Yds.

This intriguing hole is an easy birdie hole if played normally. A so-so drive and a seven iron across the corner will leave you with 100 yds. or less to the green. But don't be Greedy! The big hitters want to make the green in two. A pushed shot will land in the creek or be out of bounds. A pulled shot leaves a down hill, ball-below-the-feet shot over ugly traps in front of the green. Sevens and eights are the fate of the unwary!

Lakewood - Hole No. 9 - Par 3 - 152 Yds.

This is Lakewood's favorite hole as well as our signature hole. The hole was completely rebuilt during the club's Project '95 Update.

Bethesda - Hole No. 17 - Par 3 - 162 Yds.

The key to any good round at Bethesda is how well you play the 17th hole. You are required to negotiate 140 yds. of water. With bunkers in the front left and rear of the green, any shot that starts to drift right will require a longer carry over the water. Players are often reminded of the 15th at Augusta when their tee shot hits on the front bank, and they stand there helplessly watching their ball roll into the water. The 17th has been a decisive hole in many a match and will test the skills of any golfer.

Kenwood - Hole No. 15 - Par 3 - 201 Yds.

The 15th hole at Kenwood has a green that is tilted severely from back to front. It calls for a 4-iron from the longest hitters and a driver or three wood from most others. The rough on the left side comes across the left quarter of the green making it almost impossible to run the ball up and hold the green with a fade from the tee. Any shot that finishes above the hole leaves a lightning fast downhill sloping putt.

Norbeck - Hole No. 3 - Par 3 - 185 Yds.

The third hole at Norbeck requires the best shot in your bag to avoid the creek in front of the green. The shot must carry about 165 yds. to clear the water. The trap on the right awaits any fade or push. The beautiful flower bed in the rear enhances the beauty of the hole but is a hazard to a shot that's too strong.

Hobbit's Glen - Hole No. 11 - Par 3 - 125 Yds.

The seventeen yd. depth of the green on this par three is a demanding distance control shot with water in front and traps and a collection area behind. The photo was taken from the 159 yd. tee during the State Farm Senior Classic.

Argyle - Hole No. 12 - Par 5 - 520 Yds.

An old favorite, this rip-it-and-grip-it downhill par 5 had a major face lift to become a new favorite. It now challenges the 17th over the lake par 3 hole as our signature hole. With a new elevated tee, huge new berms on both sides down a long dog-leg right fairway, to a green almost surrounded by an expansive lake and guarded by a series of infernal traps on the "safe" side, it is a shot maker's delight, slaying the thoughtless and rewarding those who plan their shots with care.